



## Moore House, Gatliff Road, Grosvenor Waterside SW1W 8DU

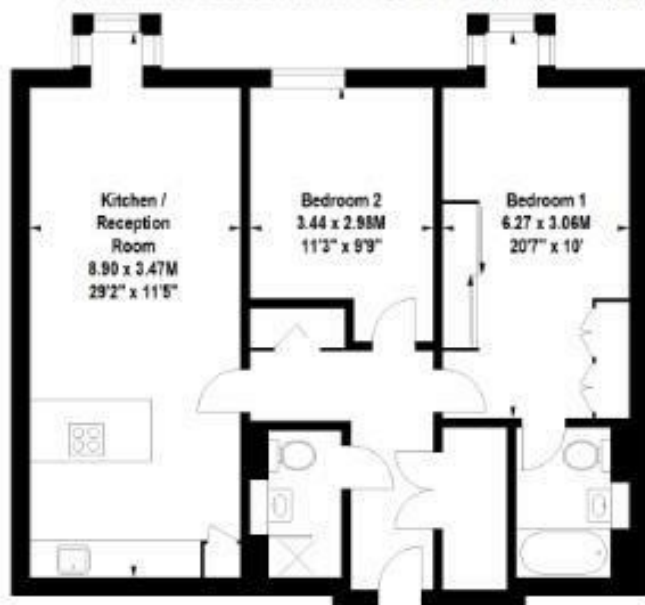
£4,800 Per Month

- 24 hour concierge and security
- close to Sloane Square and Victoria stations
- on site gym
- spa facilities
- modern build
- close to Battersea Power Station and Kings Road.

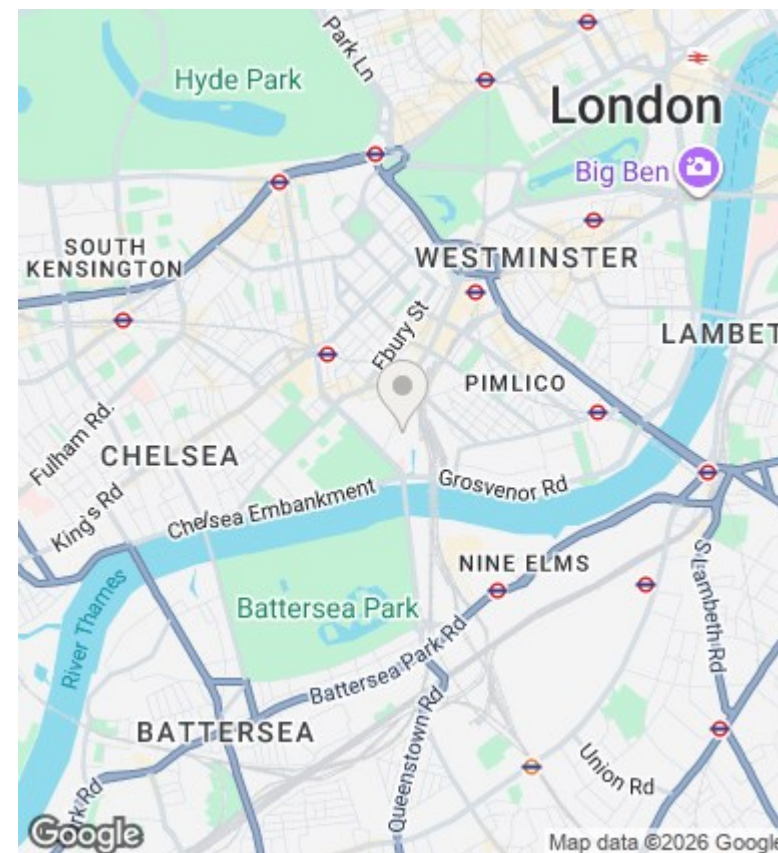


## Moore House, SW1

Approximate Gross Internal Area 80.45 sq m (866 sq ft)



Fifth Floor



## Viewings

Viewings by arrangement only.  
Call 02077225022 to make an appointment.

## Council Tax Band

F

## EPC Rating:

B

Energy Efficiency Rating		
	Current	Potential
Very energy efficient - lower running costs		
(92 plus) A		
(81-91) B	84	84
(69-80) C		
(55-68) D		
(39-54) E		
(21-38) F		
(1-20) G		
Not energy efficient - higher running costs		
England & Wales	EU Directive 2002/91/EC	